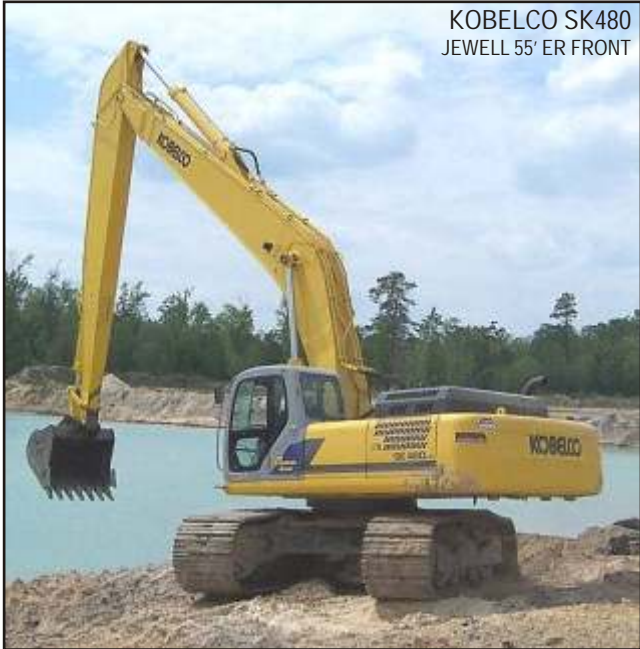


EXTREME REACH FRONTS for Excavators

- Designed and manufactured for mounting on all make and model hydraulic excavators.
- Engineered to use customers pins, cylinders, linkage and attachments.
- Complete packages Jewell provides stick cylinder, bucket cylinder and linkage.
- OEM packages, customer provides



SIZE OF BASE MACHINE

Length of FRONT	17T	20T	22T	25T	30T	35T	40T	50T
45'	●							
50'		●	●	●				
55'			●	●	●	●	●	
60'			●	●	●	●	●	
65'						●	●	
75'						●	●	
80'								●