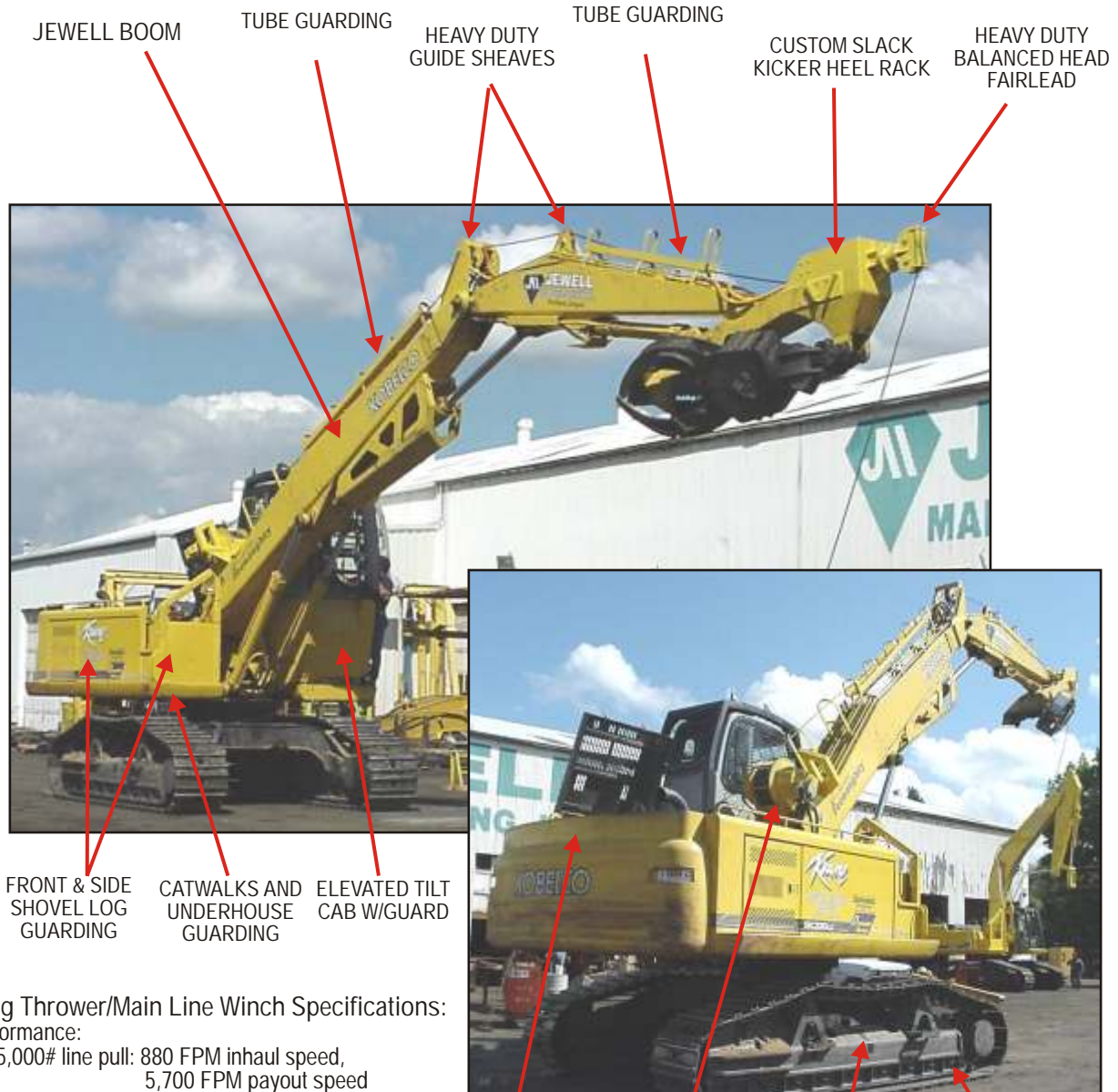


# What's in a JEWELL Tong Throwing



JEWELL BOOM

TUBE GUARDING

HEAVY DUTY  
GUIDE SHEAVES

TUBE GUARDING

CUSTOM SLACK  
KICKER HEEL RACK

HEAVY DUTY  
BALANCED HEAD  
FAIRLEAD

FRONT & SIDE  
SHOVEL LOG  
GUARDING

CATWALKS AND  
UNDERHOUSE  
GUARDING

ELEVATED TILT  
CAB W/GUARD

ADDITIONAL  
COUNTERWEIGHT

BOOM MOUNTED  
SLACK KICKER  
WINCH

HIGHWALKER  
UNDERCARRIAGE  
W/BELLY PAN

FULL LENGTH  
ROCK GUARDS

Tong Throwing/Main Line Winch Specifications:  
Performance:  
25,000# line pull: 880 FPM inhaul speed,  
5,700 FPM payout speed

## Cable Capacity

Drum#	-2	-3	-4
9/16"	950'	1467'	1899'
5/8"	728'	1125'	1456'
3/4"	516'	797'	1032'

*ADD A SECOND YARDER/HAULBACK WINCH  
AND IN MINUTES YOU CAN GO FROM TONG THROWING  
OUT TO 300' TO SHOT GUN YARDING OUT TO 1,000'*